



# QS2000

Quality, Speed and High-Definition Print

Superwide Format Solutions



**efi** print to win.

---

# Deliver the print quality and speed your customers demand – every time.

High-Definition print quality and new levels of productivity.

The VUTEK® QS2000 UV-curing printer from EFI™ is a new breed of printer from the leader in superwide format printing. By combining High-Definition Print (HDP) capability with high production speeds, the VUTEK QS2000 is the superwide printer of choice for print shops with tight deadlines and customers who demand the highest image quality.



VUTEK HDP from EFI takes your superwide printing to new levels of image quality, just as HDTV modernized the home entertainment industry. HDP combines print resolutions up to 1080 dpi, four-, six- or six-color plus white, EFI Fiery® XF image processing and unique image smoothing technologies to enable the VUTEK QS2000 to print dazzling images and sharp text. And, unlike other print engines, the VUTEK QS2000 delivers this quality at new levels of speed.

With it, you can commit to, and deliver the highest quality signs, Point-of-Purchase displays, banners and other superwide print applications faster than ever before.

The results are increased customer satisfaction, repeat business and an improved reputation for excellence and responsiveness. The VUTEK QS2000 also delivers new levels of revenue and profit growth because you can produce higher quality prints faster than ever before.

# Welcome to the world of **and**.



The VUTEK QS2000 produces brilliant four- or six-color imaging and **and** a special seventh channel with white ink for new revenue streams. Sell new and creative applications by printing white ink in six variations including overprint, underprint, spot, underspot, fill, and overspot. In addition, it prints on a wide variety of flexible and rigid substrates at speeds up to 750 square feet (70 square meters) or sixteen 4'x8' boards per hour.

Couple the VUTEK QS2000 with the EFI Fiery XF, a powerful production RIP, and increase your productivity today **and** lay the groundwork for integrating your business operations tomorrow with other EFI products.

With HDP at a true resolution of up to 1080 dpi, the VUTEK QS2000 delivers greater productivity, superior image quality **and** prints on rigid and flexible substrates up to two inches (5.08 cm.) thick and 80 inches (2 meters) wide. Plus, it offers crisp four-point text for demanding Point-of-Purchase displays.



A driving factor  
in your success.



EFI's VUTEk QS2000 enables you to sell more premium priced jobs because it produces higher quantities faster than ever before. Now, you can meet demanding delivery deadlines, while reducing costly substrate waste by combining separate images and jobs to fully utilize available print space. Increase your operator efficiency by utilizing the feed-side control module to produce a near-continuous stream of printed output by loading and initiating print from both sides of the printer. Add versatility to your production mix, while conserving valuable floor space by producing roll-to-roll and rigid applications on one machine.

### The EFI VUTEk Advantage

In today's fast-paced, highly-charged and competitive print-for-pay marketplace differentiating your company from the competition is critical. EFI delivers what no one else can — award-winning, integrated RIP, superwide printing systems and streamlined, automated business management systems. We are the market leader in print technology with services, support and scalable products that drive your business' success beyond the printer. The result is a true competitive advantage through increased capacity and capabilities without the corresponding increase in your overhead.





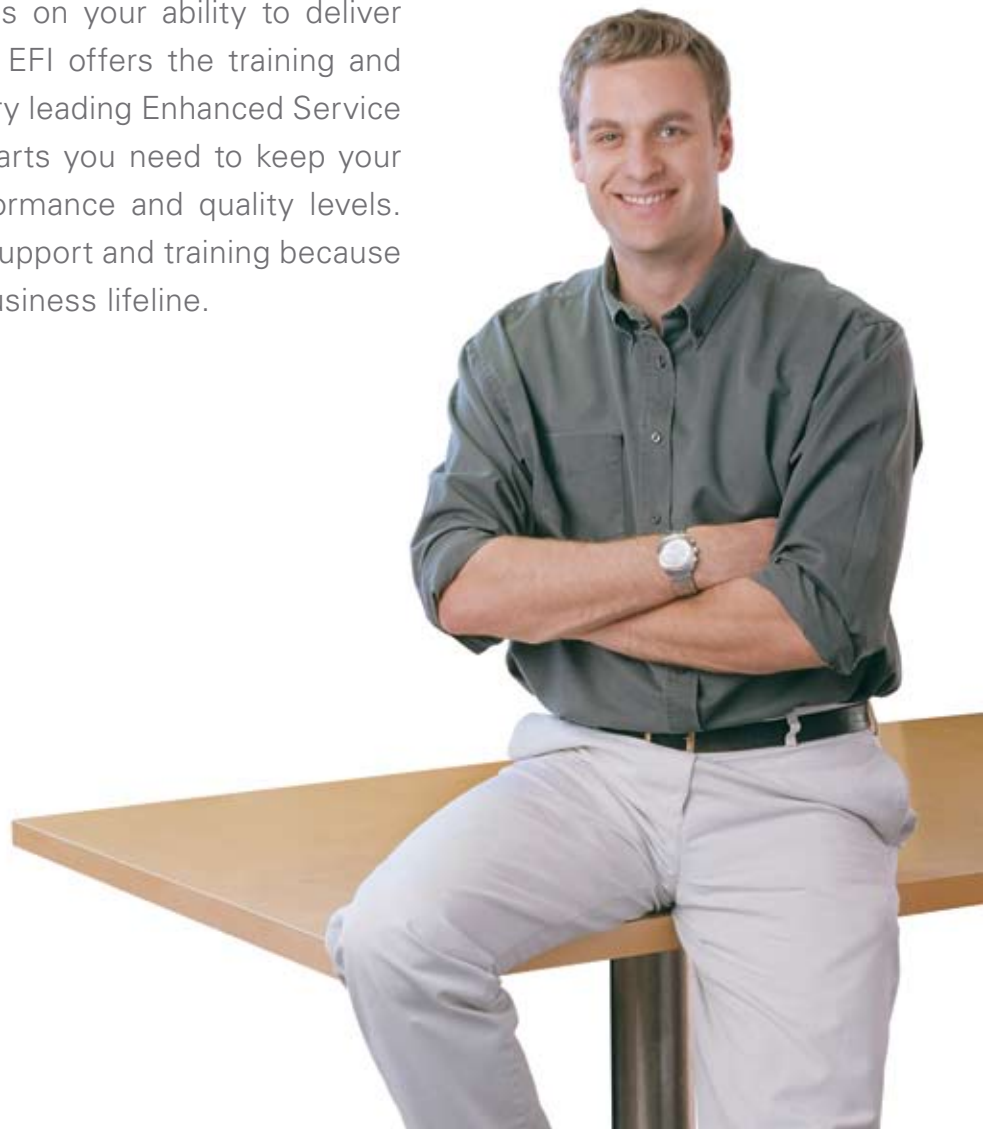
## Service you can count on today and tomorrow.

In the highly dynamic print-for-pay business landscape, downtime is the enemy. Your next job depends on your ability to deliver quality product — on time — today. EFI offers the training and service expertise that includes industry leading Enhanced Service Plans, printer and ink supplies and parts you need to keep your VUTEk QS2000 running at top performance and quality levels. Count on us for industry benchmark support and training because we understand that service is your business lifeline.



### VUTEk Inks for Your Image

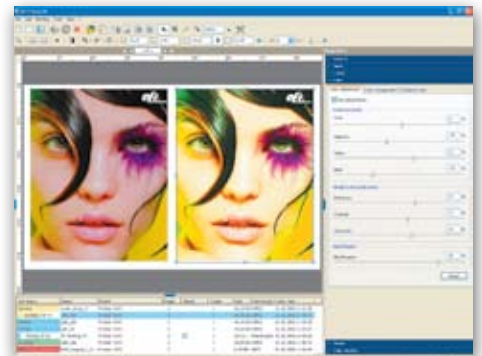
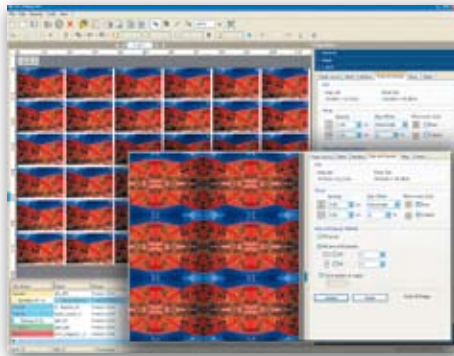
Your success depends on the inks you use. At EFI, we are dedicated to producing the highest quality inks in the world. Our VUTEk inks are engineered to produce the high-quality images your customers depend on across our entire range of printers. No other inks deliver the critical performance characteristics of purity, consistency and durability.



## EFI Fiery XF Production RIP

EFI Fiery XF is a production RIP designed to process high volumes of jobs and deliver exceptional color management on tight schedules. It leverages the full range of image quality and production capabilities of the VUTEk QS2000 to produce exceptional output every time. The flexible production RIP delivers the speed, high productivity and exceptional color consistency that your customers expect. It also maximizes the return on your current IT investment by improving output and reducing production time — translating into greater profits and shorter run times.

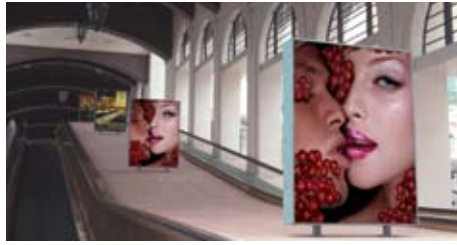
Fiery XF harnesses EFI and Bestcolor® Technology's high-performance software to deliver speed, high productivity and exceptional color quality to VUTEk superwide printers.



## EFI Print MIS Business Management Systems

EFI's industry-standard print management information systems (EFI Print MIS) such as EFI Hagen™ and EFI Logic™ manage all your business operations — from estimating to order entry to shop floor data collection, inventory, invoicing and accounting. Unlike other solutions, these management systems are used by virtually every team member — giving them real-time information to streamline and make your processes more efficient and profitable at every stage of the business cycle.

EFI Print MIS products help you take full advantage of your VUTEk digital printers and other production equipment by providing an integrated solution that connects your shop floor management, communication and production workflow.



# Specifications

## VUTEk QS2000

### Features and Benefits

- Four-, Six- or Six-Color plus white printing for outstanding clarity.
- High Definition, 1080 dpi printing.
- Additional white print capability allows printing white in six variations (overprint, underprint, spot, underspot, fill, overspot).
- Changeover to print on flexible and rigid substrates in less than one minute.
- Eliminates mounting and lamination of flexible materials for rigid application.
- Prints quality output up to 750 sq. ft./hour (70 sqm/hour) – sixteen 4' x 8' sheets per hour.
- Robust, production design for around the clock operation.

### Media/Handling

- Size: sheet and continuous feed, up to 80 inches (2 meters) wide.
- Type: flexible or rigid substrates up to 2 inches (5.08 cm) thick.

### Printing Technology

- Piezo drop-on-demand inkjet technology.
- VUTEk QS2000: user selectable 540 or 1080 dpi.
- One-year printer warranty (includes piezo inkjet heads).
- 24 x 7 technical support.

### Formats

- All popular desktop file formats, including PostScript®3™, EPS, TIFF, PDF, RGB/CMYK.

### Environmental Considerations

- Compressed Air: 95 - 150 psi maximum at 4 cf/m — dry air only (not included).
- Temperature: 68° F to 85° F (20° C to 30° C).
- Humidity: 30% to 80% (non-condensing).
- Weight: 5500.0 lbs. (2495.0 kg).
- Height: 64.75" (164.5 cm).
- Width: 186.5" (473.3 cm) including input and output tables.
- Depth: 65.0" (165.1 cm).  
+ 15" (38.1 cm) unwinder.  
+ 15" (38.1 cm) rewinder.
- Electrical: 1-phase, 70 amp, 200-240 volt supply.

### EFI Fiery XF Production RIP

- Client/Server architecture for decentralized remote operation.
- Unlimited clients for simultaneous set up of multiple jobs.
- Complete job management and set up both from Macintosh® and PC.
- Modern, intuitive graphical user interface with one click access to all job settings.
- Advanced, easy to use wizard-guided color tools for consistent predictable high color quality.
- Powerful production tools like nesting, step and repeat, scaling, cropping and tiling (flexible custom + automatic set up).
- Advanced ICC Color Management for reliable color quality output and proofing quality color on production level printers.
- Strong color recalibration, output quality and speed.
- Unlimited workflow and hot folder setup.
- File Output Module for output of color managed files to extend your service portfolio.

- Scalable, versatile platform grows with your needs when your business extends.
- Central RIP server that drives VUTEK printers, production printers, proofing printers and Fiery-driven xerographic devices (option). Proof your print on another printer simulating your VUTEk device and produce more sellable output on your VUTEK.
- Multi-lingual user interface and manuals.
- Exclusive platform for further EFI business workflow software integration.

### Colorburst® RIP Alternative

- Intuitive graphical user interface for easy operation and calibration.
- Multi-language graphical user interface.
- ICC color management.
- Tiling feature to simplify complex printing jobs.
- Automated contour cutting support.
- Innovative screenprint emulation mode.

### Inks

- VUTEk inks are supplied in 3.25 liter containers available in cyan, magenta, yellow, black, light cyan, light magenta and white.
- 3M offers the Performance Guarantee with VUTEk inks, including the 2800 Ink.
- 3M offers a 5-year 3M™ MCS™ warranty with qualified 3M inks.

### Enhanced Service Plans

Eligible for:

- Critical – eight business hour (one business day) response.
- ProActive – 16 business hour (two business day) response.
- Essential – 24 business hour (three business day) response.

Beat the competition and profit with EFI's integrated Fiery, VUTEK and APPS printing solutions. Visit [www.efi.com](http://www.efi.com).

## Print to Win

EFI ([www.efi.com](http://www.efi.com)) is the world leader in color digital print servers, and controllers; superwide format printers and inks, industrial inkjet printing systems and print management, Web-to-print and proofing solutions. EFI is dedicated to giving customers a competitive edge with award-winning, scalable solutions from creation to print that maximize productivity and increase profits. EFI maintains 26 offices worldwide.